

Follow us on



HENAN SINOCLIMA INDUSTRY CO.,LTD.

📍 Add: Building A, Hanghai Road, Zhengzhou(450000), China

☎ Tel: +86 18839792629 Fax: +86 371 88048157

✉ Email: info@sinoclima.com

🌐 Web: www.sinoclima.net



HENAN SINOCLIMA INDUSTRY CO.,LTD.

www.sinoclima.net

Company Profile



Our Story

Sinoclima was established in 2012 by a group of people with rich experience in the transport refrigeration industry. Aim to develop a high-quality transport refrigeration system and set up a global sales & services network. We focus on developing, manufacturing, marketing, and servicing transport refrigeration units, auto air conditioners, and refrigeration parts.

Advanced Technology

Adopting the ATP international standard and taking the latest European technology. We also imported the most advanced production equipment and spare parts from Germany, Italy, Japan, and the USA. Effectively improving product quality and market competitiveness.

High-Quality

All of the products are manufactured only with Top-brands partners to guarantee quality. With advanced technology, high product configuration, low failure rate, and low maintenance cost. Products have been exported to Australia, Southeast Asia, Africa, The Middle East, South America, Russia, and European countries.

Why Choose Sinoclima

Wide Product Range

We offer a high flexibility of products by providing tailor-made solutions according to customers' needs and requirements.

High Quality

All of the products are manufactured only with Top-brands partners to guarantee quality.

Competitive Rates

We have a very competitive rate and Cost-effective replacement parts, help you save money.

Technical Support

Professional team to serve you with expertise and in-time considerate feedback.

Sinoclima Product Lines

Battery Drive Unit-Roof Mount



Direct Drive Unit- Roof Mount



Direct Drive Unit- Nose Mount



Standby Unit-Roof&Nose Mount



Direct Drive Unit- Monoblock



Self-Engine Unit



Semi Trailer Unit





BATTERY DRIVE REFRIGERATOR

ET Series is battery powered which are special designed for fresh/frozen cargo transport. It application on the refrigerated truck box volume 2~5m³.

PRODUCT FEATURE:

- ❄ Streamlined and elegant appearance to van body
- ❄ Electric compressor; Low noise; Easy installation
- ❄ R404A/134A Refrigerant
- ❄ Automatic Hot Gas Defrost
- ❄ High Capacity Air Flow
- ❄ Digital In Cab Command
- ❄ Electronic Diagnostic Feature
- ❄ 2 Years Extended Warranty Available

Roof Mounted Units



Model			ET-200C	ET-200F	ET-300F
Cooling Capacity	Conditions	Temperature	Watts	Watts	Watts
	Road	0℃	1700W	2000W	1650W
		-20℃	N/A	950W	960W
Control Voltage			12V/24VDC	12V/24VDC	12V
Defrosting			Hot gas defrost(Auto./Manual)		
Temperature Range			0℃ ~ +30℃	-20℃ ~ +30℃	-20℃ ~ +30℃
Refrigerant & Volume			R134A-1.0kg	R404A-1.0kg	R404A,0.95kg±5%
Airflow Volume			950m³/h	950m³/h	950m³/h
Voltage &Amps		12VDC	85Ah	90Ah	12VDC
		24VDC	60Ah	70Ah	70Ah(Max100Ah)
Condenser		Model	Electric Compressor	Electric Compressor	Electric Compressor
		Displacement	18cc/r	18cc/r	14.5cc/r
		Type	Parallel Flow Condenser		
		Qty of Fans	1Pc	1Pc	1Pc
Compressor		Model	Electric Compressor	Electric Compressor	Electric Compressor
		Displacement	18cc/r	18cc/r	14.5cc/r
Evaporator		Type	Inner Grooved Copper Tube and Fin		
		Qty of Fans	1Pc	1Pc	1Pc
		Dimensions	606×523×195 mm	606×523×195 mm	725×560×170mm
		Weight	13.5Kg	13.5Kg	13.5Kg
Recommended Box Volume			3~5m³	3~5m³	2~8m³
Optional function			Heating and Electric standby		

Specifications are subject to change without priority notice. www.sinoclima.net



VAN REFRIGERATION UNIT

SF-260T/360T/460T is special designed for vehicles up to 25 m3 refrigerated van. Refrigeration systems for chilling and deep freezing whether panel van or box bodies.

PRODUCT FEATURE:

- ❄ R404a Refrigerant
- ❄ Operation on 12/24V DC Vehicles
- ❄ In-cab Digital Controller, with e-diagnostics
- ❄ Ultra-Slim Evaporator with Huge Air Volume
- ❄ Automatic and Manual Hot Gas Defrost
- ❄ High pressure and Low pressure switch
- ❄ Expansion Valve with MOP
- ❄ Oil Separator and Refrigerant Reservoir

Roof Mounted Units



Model			SF-260T	SF-360T	SF-460T
Cooling Capacity	Conditions	Temperature	Watts	Watts	Watts
	Road	0°C	2020W	3200W	5100W
		-20°C	1130W	1500W	2450W
Control Voltage			DC 12V/24V		
Defrosting			Hot gas defrost(Auto./Manual)		
Temperature Range			-25°C ~ +30°C		
Refrigerant & Volume			R404A,0.8kg	R404A,1.1kg	R404A,1.3kg
Airflow Volume			900m³/h	1800m³/h	2200m³/h
Compressor	Model		GY-5S14	QP16	QP16
	Displacement		138cc/r	163cc/r	163cc/r
Condenser	Type		Parallel Flow Condenser		
	Qty of Fans		1Pc	2Pcs	2Pcs
	Dimensions		920×665×210 mm	1060×730×220 mm	1060×730×220 mm
	Weight		26Kg	32Kg	35Kg
Evaporator	Type		Inner Grooved Copper Tube and Fin		
	Qty of Fans		1Pc	2Pcs	2Pcs
	Dimensions		800×600×180 mm	1020×635×210 mm	1020×635×210 mm
	Weight		13Kg	22Kg	26Kg
Recommended Box Volume			8~12m³	12~16m³	16~25m³
Optional function			Heating and Electric standby		

Specifications are subject to change without priority notice. www.sinoclima.net



TRUCK REFRIGERATION UNIT

C-200/300 is R134a Eco-friendly refrigerant, temperature range is -5°C to +25°C, which are especially designed for delivering chilled foods, such as flowers, meat, milk, yoghourt, vegetables...

PRODUCT FEATURE:

- ❄ Streamlined and elegant appearance to van body
- ❄ H/P, L/P protection of cooling system
- ❄ R134A Refrigerant
- ❄ Automatic Hot Gas Defrost
- ❄ High Capacity Air Flow
- ❄ Digital In Cab Command
- ❄ Electronic Diagnostic Feature
- ❄ 2 Years Extended Warranty Available

Nose Mounted Units



Model			C-200	C-300	T-200	T-300
Cooling Capacity	Conditions	Temperature	Watts	Watts	Watts	Watts
	Road	0℃	1700W	2700W	1700W	2700W
		-20℃	N/A	N/A	N/A	N/A
Control Voltage			DC 12V/24V			
Defrosting			N/A			
Temperature Range			-5℃ ~ +30℃			
Refrigerant & Volume			R134A,0.9kg	R134A,1.4kg	R134A,0.8kg	R134A,1.3kg
Airflow Volume			950m³/h	1500m³/h	950m³/h	1500m³/h
Compressor	Model		GY-5S11	GY-5S14	GY-5S11	GY-5S14
	Displacement		108cc/r	138cc/r	108cc/r	138cc/r
Condenser	Type		Parallel Flow Condenser			
	Qty of Fans		1Pc	1Pc	1Pc	1Pc
	Dimensions		925*430*300mm	925*430*300mm	700*700*190mm	880*865*210mm
	Weight		20Kg	20Kg	14.5Kg	19Kg
Evaporator	Type		Inner Grooved Copper Tube and Fin			
	Qty of Fans		1Pc	2Pcs	1Pc	2Pcs
	Dimensions		610*550*175mm	850*550*175mm	610*550*175mm	850*550*175mm
	Weight		13Kg	19Kg	13Kg	19Kg
Recommended Box Volume			8m³	15m³	8m³	15m³
Optional function			Electric standby			

Specifications are subject to change without priority notice. www.sinoclima.net



TRUCK REFRIGERATION UNITS

SF-200/300/350Pro are special designed for vehicles up to 25 m3 refrigerated truck box. Refrigeration systems for chilling and deep freezing whether panel van or box bodies.

PRODUCT FEATURES

- ❄ Ultra-Slim Evaporator with huge air volume
- ❄ In-cab Digital Controller, with e-diagnostics
- ❄ Automatic and Manual Hot Gas Defrosting
- ❄ HP/LP switch protection
- ❄ Oil Separator
- ❄ Refrigerant Reservoir
- ❄ CPR Regulator
- ❄ Liquid Injection valve
- ❄ Expansion Valve with MOP

Nose Mounted Units



Model			SF-200pro	SF-300pro	SF-350pro
Cooling Capacity	Conditions	Temperature	Watts	Watts	Watts
	Road	0℃	2200W	3100W	3800W
		-20℃	1127W	1770W	2250W
Control Voltage			DC 12V/24V		
Defrosting			Hot gas defrost(Auto./Manual)		
Temperature Range			-25℃ ~ +30℃		
Refrigerant & Volume			R404A,1.0kg±5%	R404A,1.2kg±5%	R404A,1.8kg±5%
Airflow Volume			950m³/h	1000m³/h	1830m³/h
Compressor	Model		GY-5S11	QP16	QP16
	Displacement		108cc/r	163cc/r	163cc/r
Condenser	Type		Parallel Flow Condenser		
	Qty of Fans		1Pc	1Pc	1Pc
	Dimensions		780×553×230 mm	880×553×230 mm	1010×553×230 mm
	Weight		16Kg	19Kg	21Kg
Evaporator	Type		Inner Grooved Copper Tube and Fin		
	Qty of Fans		1Pc	1Pcs	2Pcs
	Dimensions		603×538×230 mm	1105×649×230 mm	1105×649×230 mm
	Weight		13Kg	17Kg	17Kg
Recommended Box Volume			8~12m³	10~20m³	15~25m³
Optional function			Heating and Electric standby		

Specifications are subject to change without priority notice. www.sinoclima.net



TRUCK REFRIGERATION UNIT

SF-400/450Pro are special designed for vehicles up to 30 m3 refrigerated truck box. Refrigeration systems for chilling and deep freezing whether panel van or box bodies.

PRODUCT FEATURES

- ❄ Ultra-Slim Evaporator with huge air volume
- ❄ In-cab Digital Controller, with e-diagnostics
- ❄ Automatic and Manual Hot Gas Defrosting
- ❄ HP/LP switch protection
- ❄ Oil Separator
- ❄ Refrigerant Reservoir
- ❄ CPR Regulator
- ❄ Liquid Injection valve
- ❄ Expansion Valve with MOP

Nose Mounted Units



Model			SF-400pro	SF-450pro
Cooling Capacity	Conditions	Temperature	Watts	Watts
	Road	0℃	4380W	4500W
		-20℃	2300W	2500W
Control Voltage			DC 12V/24V	
Defrosting			Hot gas defrost(Auto./Manual)	
Temperature Range			-25℃ ~ +30℃	
Refrigerant & Volume			R404A,1.3kg±5%	R404A,1.4kg±5%
Airflow Volume			1830m³/h	1830m³/h
Compressor&Displacement		Road	QP16/163cc	QP16/163cc
Condenser		Type	Parallel Flow Condenser	
		Qty of Fans	2Pcs	2Pcs
		Dimensions	1080×535×340 mm	1270*590*415 mm
		Weight	36Kg	38Kg
Evaporator		Type	Inner Grooved Copper Tube and Fin	
		Qty of Fans	2Pcs	2Pcs
		Dimensions	1080×619×200 mm	1080*619*205 mm
		Weight	21Kg	22.5Kg
Recommended Box Volume			16~25m³	18~28m³
Optional function			Heating and Electric standby	

Specifications are subject to change without priority notice. www.sinoclima.net



TRUCK REFRIGERATION UNITS

SF-550/700/760 truck refrigeration is special designed for refrigerated truck body to keep fresh,frozen and deep frozen ,powered by the engine of the vehicle, and it has great advantages in fuel saving, environmental and highly efficient.

PRODUCT FEATURES

- ❄ R404a Refrigerant
- ❄ Operation on 12/24V DC Vehicles
- ❄ QP16/QP21 Compressor
- ❄ In-cab Digital Controller, with e-diagnostics
- ❄ Automatic and Manual Hot Gas Defrost
- ❄ CPR Regulator
- ❄ Expansion Valve with MOP
- ❄ Oil Separator and Refrigerant Reservoir

Nose Mounted Units



Model			SF-550pro	SF-700pro	SF-760pro
Cooling Capacity	Conditions	Temperature	Watts	Watts	Watts
	Road	0℃	5800W	6870W	7225W
		-20℃	3000W	3650W	3860W
Control Voltage			DC 12V/24V		
Defrosting			Hot gas defrost(Auto./Manual)		
Temperature Range			- 25℃ ~ +30℃		
Refrigerant & Volume			R404A,2.8kg±5%	R404A,3.0kg±5%	R404A,3.9kg±5%
Airflow Volume			2310m³/h	2460m³/h	2460m³/h
Compressor&Displacement		Road	QP16/163cc	QP21/213cc	QP21/213cc
Condenser	Type	Parallel Flow Condenser			
	Qty of Fans	2Pcs	2Pcs	2Pcs	
	Dimensions	1456*540*505mm	1410*543*503mm	1456*540*505mm	
	Weight	59Kg	60Kg	61Kg	
Evaporator	Type	Inner Grooved Copper Tube and Fin			
	Qty of Fans	3Pc	3Pcs	3Pcs	
	Dimensions	1224*508*278 mm	1230*550*300 mm	1224*555*278 mm	
	Weight	33Kg	33Kg	37Kg	
Recommended Box Volume			25~35m³	30~40m³	35~45m³
Optional function			Heating and Electric standby		

Specifications are subject to change without priority notice. www.sinoclima.net



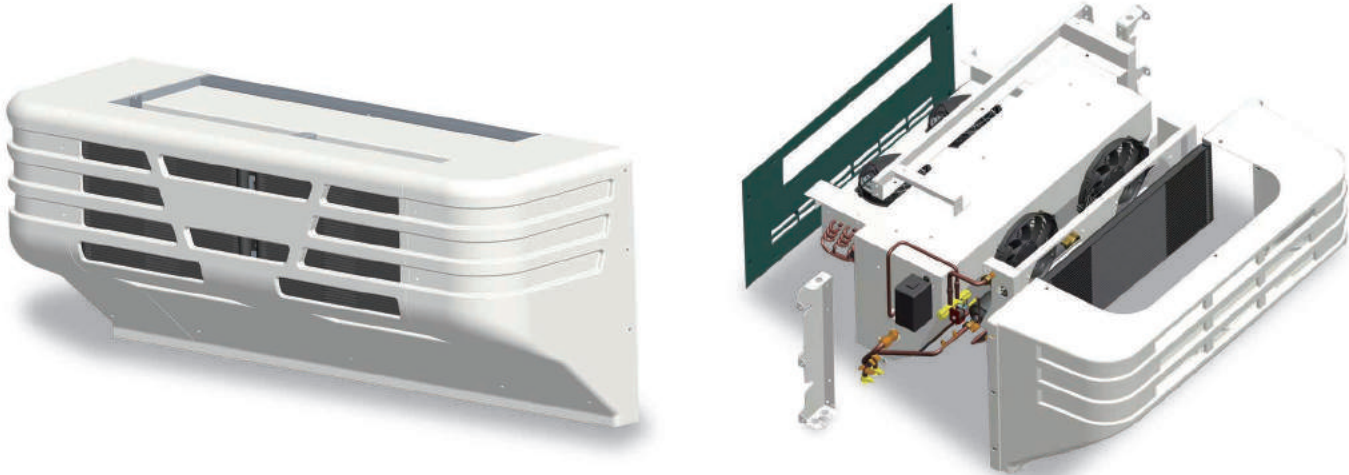
MONOBLOCK REFRIGERATION UNIT

M series is a monoblock condenser and evaporator design that benefits of zero intrusion into the load space to allow highly efficient cargo loading, Compressor is driven by the truck engine.

PRODUCT FEATURES

- ❄ R404a Refrigerant
- ❄ Operation on 12/24V DC Vehicles
- ❄ TM16/TM21 Compressor
- ❄ In-cab Digital Controller, with e-diagnostics
- ❄ Automatic and Manual Hot Gas Defrost
- ❄ Expansion Valve with MOP
- ❄ Oil Separator and Refrigerant Reservoir

Nose Mounted Units



Model			M-480	M-580
Cooling Capacity	Conditions	Temperature	Watts	Watts
	Road	0℃	4560W	5530W
		-20℃	2450W	2950W
Control Voltage			DC 12V/24V	
Defrosting			Hot gas defrost(Auto./Manual)	
Temperature Range			-25℃ ~ +30℃	
Structure			Integrated unit	
Dimensions			1210*550*420mm	1952*535*706mm
Net Weight			85kg	85kg
Refrigerant & Volume			R404A,1.4kg±5%	R404A,2.5kg±5%
Compressor	Model		GY-TM16	GY-TM21
	Displacement		177cc/r	213cc/r
Condenser	Type		Parallel Flow Condenser	
	Fan Type		Axial Fan	Axial Fan
	Number of Fan		2 Fans * 1000m ³ /h	2 Fans * 1000m ³ /h
Evaporator	Type		Inner Grooved Copper Tube and Fin	
	Fan Type		Axial Fan	Axial Fan
	Number of Fan		3 Fans * 1000m ³ /h	3 Fans * 1000m ³ /h
Recommended Box Volume			7~15m ³	12~25m ³
Optional function			Heating and Electric standby	

Specifications are subject to change without priority notice. www.sinoclima.net



SELF ENGINE UNITS

The Self-engine truck refrigeration units are self powered using German GEA Bock compressor, powered by a Perkins 3 cylinders diesel engine and electric motor.

STANDARD CONFIGURATION

- ❄ Perkins engine low noise, low emission, and low vibration level
- ❄ German GEA Bock compressor
- ❄ In-cab remote display and control
- ❄ 3-Phase standby motor
- ❄ R-404A Eco-friendly refrigerant
- ❄ Automatic and manual defrost system
- ❄ Automatic phase failure correction

SAFETY PROTECT SYSTEM

- ❄ Emergency switch protection
- ❄ System high pressure protection
- ❄ Multiple safety protection devices
- ❄ Engine coolant water temperature overheat production
- ❄ Thermal protection guard
- ❄ System low pressure protection
- ❄ Engine low oil pressure protection

Nose Mounted Units



Models			SF-800D	SF-1000D	SF-1200D
	Road/Standby	Temperature	Watt	Watt	Watt
Cooling Capacity	Engine	0℃	7150W	8250W	11210W
		-20℃	3960W	5185W	6785W
	Standby	0℃	6240W	6820W	8500W
		-20℃	3295W	4485W	6100W
	Airflow Volume			2350m³/h	2580m³/h
Temp. range			-30℃~30℃	-30℃~30℃	-30℃~30℃
Refrigerant and volume			R404A/4.8KG	R404A/5.6KG	R404A/6.3KG
Defrost			Automatic hot gas defrost		
Voltage			12VDC	12VDC	12VDC
Engine		Model	BOCK FKX30	BOCK FKX40	BOCK FKX40
		Displacement	235TK/233cc	390TK/390cc	560TK/560cc
		Model	Perkins 403D-07	Perkins 403D-07	Perkins 403D-11
No. of cylinder			3	3	3
Electric Standby Voltage Options			220V/240V/380V/400V/3Phase 50Hz/60Hz		
Overall Size			1825*860*630 mm	1825*860*630 mm	1915*970*690 mm
Evaporator Opening Size			1245*310 mm	1245*310 mm	1245*350 mm
Weight			432kg	475kg	634kg
Recommend Box Volume			25~40m³	35~55m³	55~65m³

Specifications are subject to change without priority notice. www.sinoclima.net



TRAILER UNIT

ST-2000D self powered trailer refrigeration unit for cooling and heating up to 13.7 meter length semi trailers.

INTELLIGENT CONTROL SYSTEM

- ❄ Engine low oil pressure switch protection
- ❄ Engine high coolant temperature switch protection
- ❄ Engine rotational speed RPM protection
- ❄ Exhaust gas temperature protection
- ❄ System High Pressure protection
- ❄ System Low Pressure protection
- ❄ System 12VDC voltage protection
- ❄ System 12VDC electric current monitoring and protection
- ❄ Fuel heating devices
- ❄ Door switch
- ❄ System HP/LP real-time monitoring

Nose Mounted Units

Engine

Driven by original Perkins diesel engine, especially modified for rugged and economical transport refrigeration application. High performance and fuel efficient 2.2 litre displacement 4 cylinder diesel engine (2212cc or 135in3) Power 25.8kW @ 1900 Engine RPM 14.6L lubricating oil.

Compressor

High quality German 4 cylinder Bock. Displacement 650cc. Single unloader valves for capacity control via uP controller. (Dual unloader is optional)



Models		SF-2000D
Cooling Capacity	Temperature	Watt
	0°C	19,500W
	-20°C	10,900W
Airflow Volume		2350m³/h
Temp. range		-30°C~30°C
Refrigerant and volume		R404A/7.5KG
Defrost		Automatic hot gas defrost
Operating Voltage		12VDC
Compressor	Model	BOCK FKX60
	Displacement	650TK/650cc
Engine	Model	Perkins
	No. of cylinder	4
Condenser Section Dimensions		1945×2270×592mm
Evaporator Housing Dimensions		1685×1150×204mm
Required Front Wall Opening		1696×1168mm
Weight	Unit (engine drive only, no standby)	880kg
	Battery	25kg
	Aluminum Fuel Tank(180L)	12.8kg
Recommend Box Volume		95~100m³

Specifications are subject to change without priority notice. www.sinoclima.net